

D

USB-UART 1-Channel Evaluation Board

C

Exar XR21V1410 based 1-Channel USB-UART Evaluation Board with RS-232 and RS-485 interfaces

B

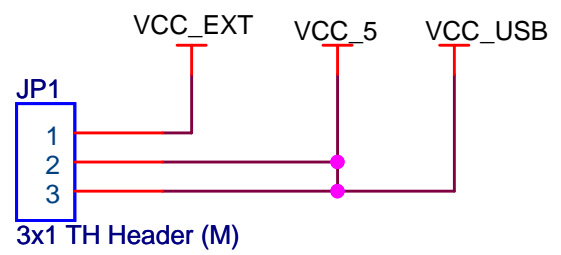
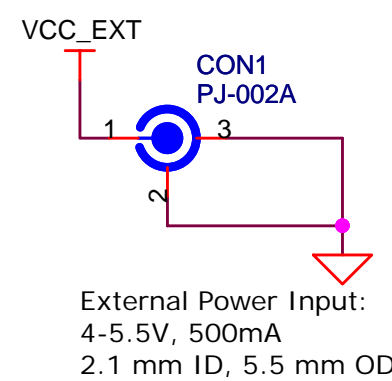
EXAR
XR21V1410
Rev 3.0

A

Index

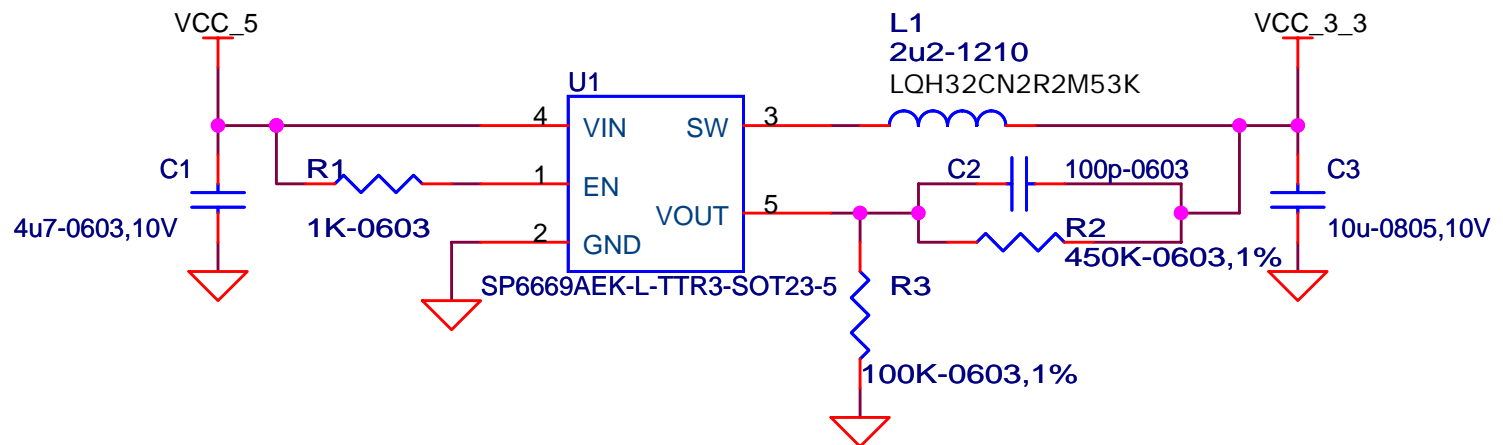
- Sheet #01 - Cover Page
- Sheet #02 - Power Supply
- Sheet #03 - Exar 1-Channel USB-UART
- Sheet #04 - RS-232 Transceiver
- Sheet #05 - RS-485 Transceiver
- Sheet #06 - Manufacturing Points

| | | | |
|---|------------------------|--------------|------------|
| Copyright ©2009 Exar Corporation. All rights reserved. | | | |
| Schematic | | sch_top | |
| | | Cover Page | |
| Title | | | |
| USB-UART 1-Channel Evaluation Board | | | |
| Size | Document Number | | Rev |
| A | SCH-UU1CHEVB-0910-B1B | | 3.0 |
| Date: Wednesday, September 09, 2009 | | Sheet | 1 of 6 |



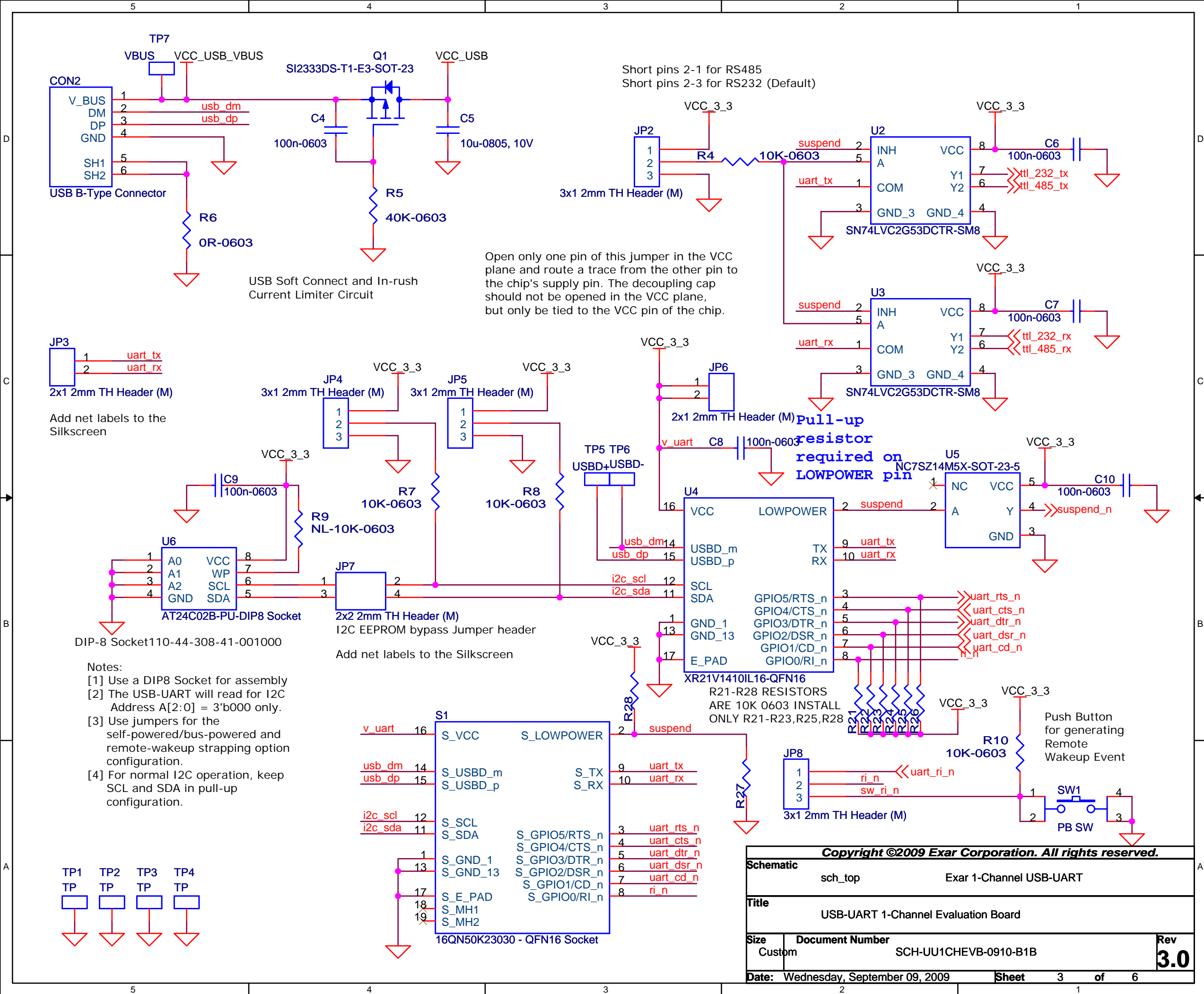
- Notes:
- [1] This jumper can also be used for current/power measurement of the board. Remove the jumper and connect probe instead of the jumper.
 - [2] The necessary strapping options must be selected for the USB-UART chip for the bus-powered or self-powered configurations.
 - [3] None of these pins should be opened in the power plane to support the isolation of the traces.

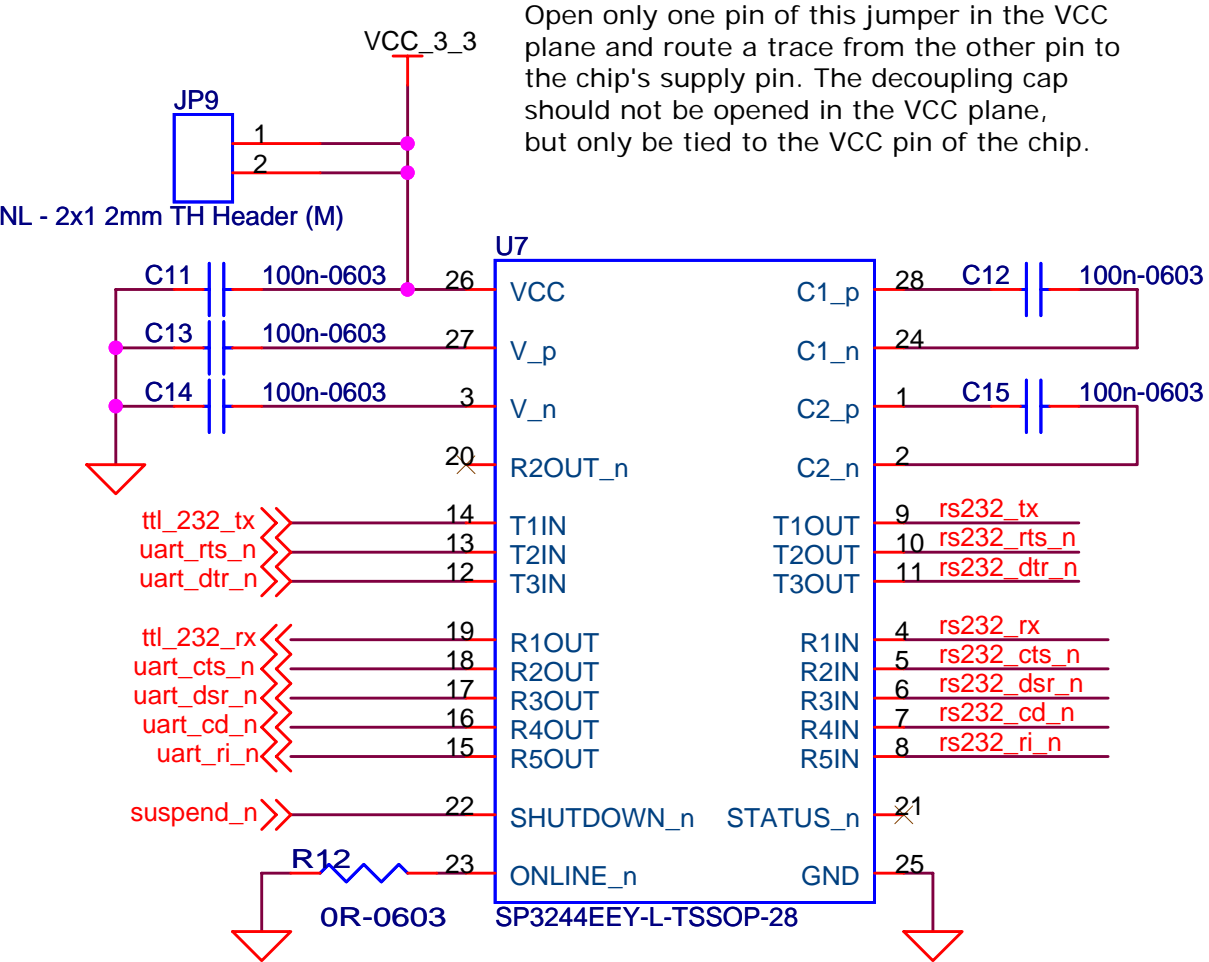
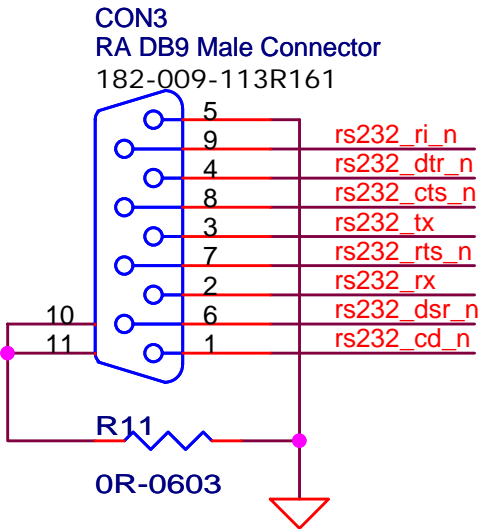
Power Select Header Jumper Options:
Short pins 2-1 => The board is powered from external power supply of 5V (self-powered)
Short pins 2-3 => The board is powered from USB VBUS power (bus-powered)



NOTE: For self-power, EN pin should be connected to VCC_USB

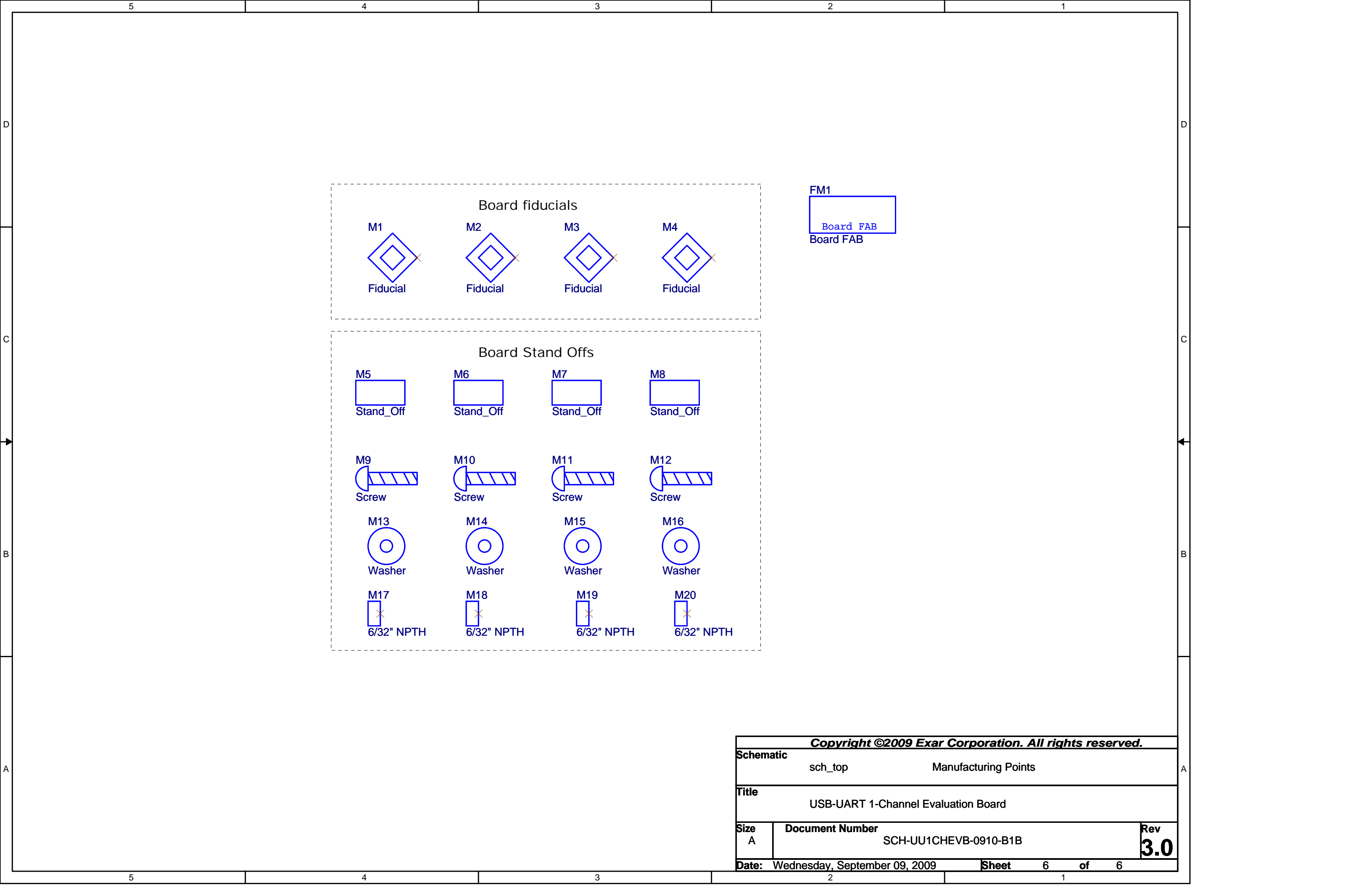
| | | | |
|---|---|--------------|--------------------------|
| Copyright ©2009 Exar Corporation. All rights reserved. | | | |
| Schematic | | | |
| sch_top | | Power Supply | |
| Title | | | |
| USB-UART 1-Channel Evaluation Board | | | |
| Size A | Document Number SCH-UU1CHEVB-0910-B1B | | Rev 3.0 |
| Date: | Wednesday, September 09, 2009 | Sheet | 2 of 6 |





NOTE: When using SP3243, tie U7.23 to VCC_3_3

| | | | | | |
|-------------------------------------|--|--------------------|-------|--------|-------------------|
| Schematic | | | | | |
| sch_top | | RS-232 Transceiver | | | |
| Title | | | | | |
| USB-UART 1-Channel Evaluation Board | | | | | |
| Size A | Document Number SCH-UU1CHEVB-0910-B1B | | | | Rev 3.0 |
| Date: Wednesday, September 09, 2009 | | | Sheet | 4 of 6 | |



FM1

Board FAB

Board FAB

| | | |
|--|--|------------|
| Copyright ©2009 Exar Corporation. All rights reserved. | | |
| Schematic | sch_top Manufacturing Points | |
| Title USB-UART 1-Channel Evaluation Board | | |
| Size A | Document Number SCH-UU1CHEVB-0910-B1B | Rev 3.0 |
| Date: Wednesday, September 09, 2009 Sheet 6 of 6 | | |